



The Olson Slim Range is ideal for wall or floor mounting and available in 10 different sizes.

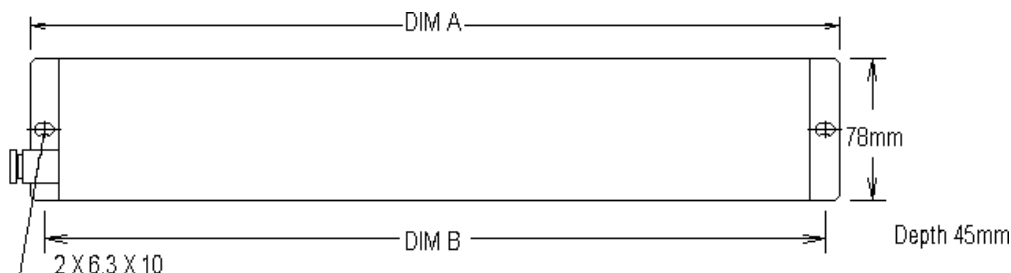
Standard Specifications Includes:

- A robust mild steel construction
- Light grey RAL 7035 paint finish
- Internal wiring 2.5mm² - 20A rating
- Earth bonded with external M5 earth stud fitted with 250mm earth lead and terminated with a M6 earth tag
- Red neon "mains on" indicator
- Brackets on each side for easy fixing/installation
- 2m cable - PVC (1.5mm² 3 core) terminated with a 13A fused plug

Optional Extras:

- Longer cable lengths
- Flexible metal conduit with 3 x 4mm² conductors and red illuminated fuse holder 13A maximum
- Electrak 32A tap-off and red illuminated fuse - 13A maximum
- LSF (LS0H) cable
- Clean earth
- 16A IEC 309 (BS4343/Commando style plug)
- Other options made to order

13A Slim Range			
Type	No. of Sockets	Dimension in mm	
		A	B
N13A/2	2	232	217
N13A/3	3	282	267
N13A/4	4	348	333
N13A/5	5	416	401
N13A/6	6	482	467
N13A/7	7	552	537
N13A/8	8	624	609
N13A/9	9	695	680
N13A/10	10	755	740
N13A/12	12	896	881



Technical Data

- 13A socket - BS1363
- Cable - BS 6500
- 13A Plug / Fuse Link - BS1363 / ASTA BS1362
- Current rating - To suit fitted plug (13A/16A)
- Normal operating voltage - 230VAC
- Maximum Operating voltage - 250VAC
- Approved to - EN 60950 CE
- RoHS Compliant



The extra safety features of these units are the panel mounted 7A fuse as standard and optional double pole switched socket outlets or double pole mains switch.

Ideal for wall or floor mounting and available in 15 different versions.

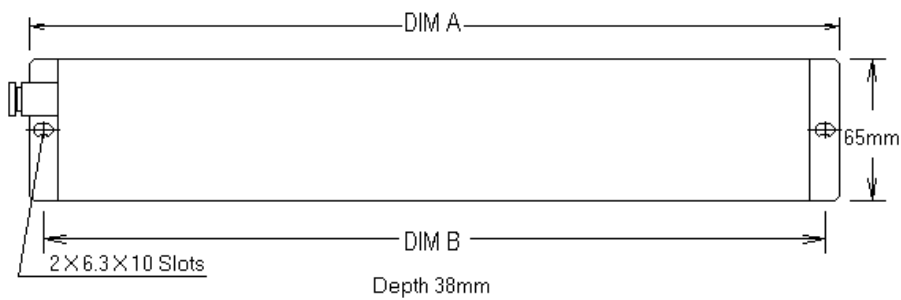
Standard Specification Includes

- A robust mild steel construction
- Light grey RAL 7035 paint finish
- Internal wiring 2.5mm² - 20A rating
- Earth bonded with external M5 earth stud fitted with 250mm earth lead and terminated with a M6 earth tag
- Red neon "mains on" indicator
- Optional double pole switched sockets
- Optional illuminated On-Off switch
- Panel mounted 7A fuse
- Brackets on each side for easy fixing/installation
- 2m cable - PVC (1.5mm² 3 core) terminated with a 13A fused plug

Optional Extras

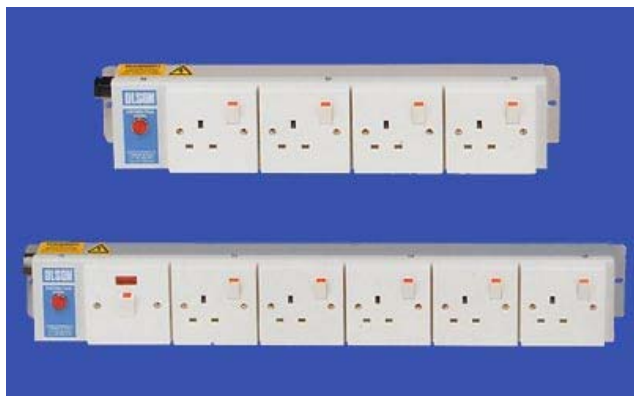
- Longer cable lengths or flexible metal conduit
- LSF cable
- Clean earth
- Other options made to order

13A Fused Super Slim Range					
Unswitched Sockets and Mains Neon	Double Pole Switched Sockets and Mains Neon	Unswitched Sockets and Illuminated On/Off Switch	No. of Sockets	Dimension in mm	
				A	B
DP13A/2	DP13A/2SW	DP13A/2MS	2	216	200
DP13A/4	DP13A/4SW	DP13A/4MS	4	350	334
DP13A/6	DP13A/6SW	DP13A/6MS	6	484	468
DP13A/8	DP13A/8SW	DP13A/8MS	8	618	602
DP13A/10	DP13A/10SW	DP13A/10MS	10	752	736



Technical Data

- 13A socket - BS1363
- Panel mounted fuse - UL CSA
- Fuse link 7A - BS2950A
- Cable - BS6500
- Plug - 13A UK to BS1363
- Fuse - link 13A-ASTA BS1362
- Current rating - 13A max.
- Max. Operating voltage - 250V max.
- Manufactured to - BS5733
- Approved to - EN 60950 CE
- RoHS Compliant



For the office, laboratory or workshop environment. These units can be used free standing, fitted to benches and fitted to walls.

Standard Specification Includes:

- A robust mild steel construction
- Light grey RAL 7035 paint finish
- Internal wiring 2.5mm² - 20A rating
- Earth bonded with external M5 earth stud fitted with 250mm earth lead and terminated with a M6 earth tag
- Red neon "mains on" indicator
- Optional 10A MCB
- 2m 1.5mm² 3 core PVC cable terminated with a 13A fused plug
- Fitted with brackets either side for wall or bench mounting

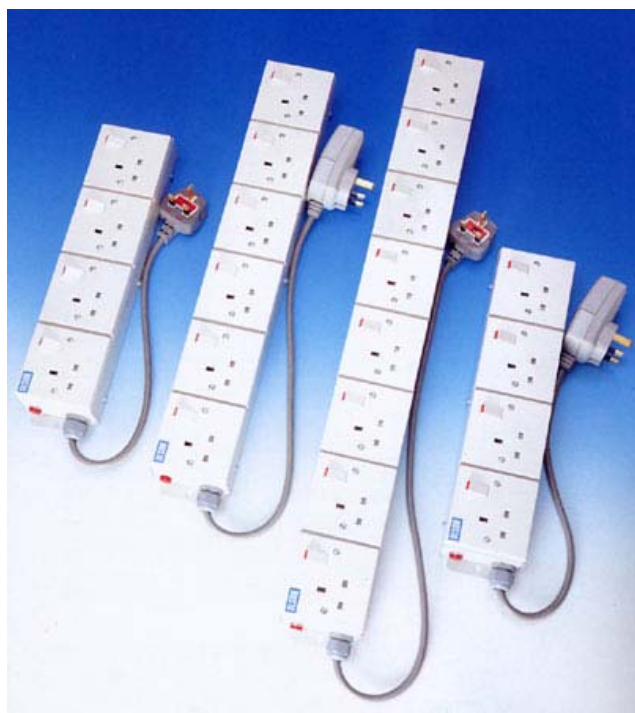
Optional Extras

- Longer cable lengths
- Illuminated double pole switch with shroud
- Illuminated fuse (13A max)
- 16A BS 4343 Commando plug
- Specials and other options made to order

Flat Box: Individually Switched Sockets, No Main Switch		
Type	No. of Sockets	Dimensions L x H x D
13A/2SW FLAT	2	265 x 89 x 47
13A/4SW FLAT	4	441 x 89 x 47
13A/6SW FLAT	6	616 x 89 x 47
13A/8SW FLAT	8	791 x 89 x 47
Flat Box: Non Switched Sockets, Main Switch		
Type	No. of Sockets	Dimensions L x H x D
13A/5/MS	5	616 x 89 x 47
Flat Box: Individually Switched Sockets with 10A MCB		
Type	No. of Sockets	Dimensions L x H x D
13A/3SW/CB Flat	3	441 x 111 x 55
13A/4SW/CB Flat	4	528 x 111 x 55
13A/5SW/CB Flat	5	616 x 111 x 55
Flat Box: Individually Switched Sockets, Main Switch		
Type	No. of Sockets	Dimensions L x H x D
13A/5SW/MS	5	616 x 89 x 47
13A/6SW/MS	6	616 x 89 x 47

Technical Data

- 13A socket - BS 1363
- Cable - BS 6500
- Plug - BS1363
- Fuse-link 13A - ASTA BS1362
- Current rating - 13A max.
- Nominal operating voltage - 230VAC
- Maximum operating voltage - 250VAC
- Manufactured to - BS5733
- Approved to - EN 60950 CE
- RoHS Compliant



Power Distribution Units suitable for bench, wall or floor mounting.

Standard Specification Includes:

- A robust mild steel construction
- Light grey RAL 7035 paint finish
- Internal wiring 2.5mm² - 20A rating
- Earth bonded with external M5 earth stud fitted with 250mm earth lead and terminated with a M6 earth tag
- Red mains on neon.
- Brackets on each side for easy fixing and installation

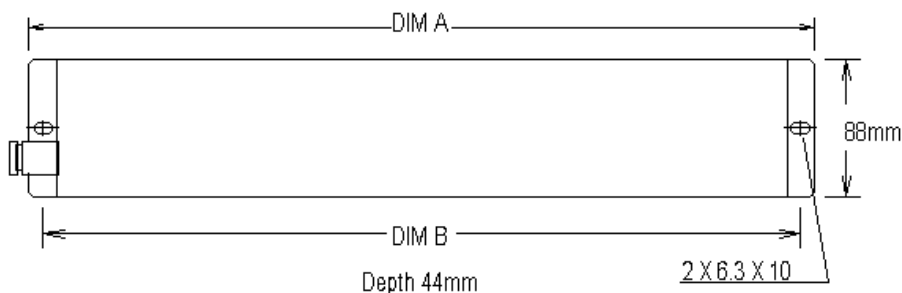
Four options are available:

- Supplied without cable or plug
- 2m 1.5mm² 3 core PVC cable terminated with 13A fused plug
- 2m 1.5mm² 3 core PVC cable terminated with 13A plug top 30mA RCD trip
- Empty box ideal for data or telephone sockets



Optional empty box

Distribution Panel Without Cable						
Without Cable	2m Cable and 13A Plug	2m Cable and 13A Plug Top RCD	Empty Box (for data or telephone sockets etc)	No. of Sockets	Dimension in mm	
					A	B
F13A/4	P13A/4	RCD13A/4	E13A/4	4	387	372
F13A/5	P13A/5	RCD13A/5	E13A/5	5	475	460
F13A/6	P13A/6	RCD13A/6	E13A/6	6	563	548
F13A/8	P13A/8	RCD13A/8	E13A/8	8	739	724
F13A/10	P13A/10	RCD13A/10	E13A/10	10	915	900



Technical Data

- 13A socket - BS 1363
- Cable - BS 6500
- Plug - BS1363
- Fuse-link 13A - ASTA BS1362
- Current rating - 13A max.
- Nominal Operating Voltage - 230VAC
- Maximum Operating Voltage - 250VAC
- Manufactured to - BS5733
- Approved to - EN 60950 CE
- RoHS Compliant



Free standing sloping power distribution units for bench or floor mounting.

Standard Specification Includes:

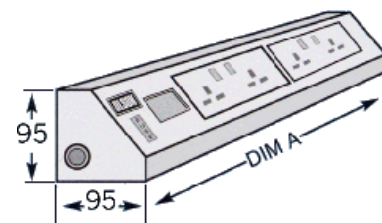
- A robust mild steel construction
- Light grey RAL 7035 paint finish
- Internal wiring 2.5mm² - 20A rating
- Earth bonded with external M5 earth stud fitted with 250mm earth lead and terminated with a M6 earth tag
- 2m cable - PVC (1.5mm² 3 core) terminated with a 13A fused plug
- Options of 'mains on' neon, shrouded illuminated switch or RCD trip
- Combination unit available with RJ45 sockets. The RJ45 sockets are supplied unwired as standard but can be optionally supplied tailed and terminated with RJ45 plugs (3m, 5m or 7m cable)

Mains on Neon Indicator		
Type	No. of Sockets	Dimension in mm
2613	2	235
2614	4	410
2615	6	586
2616	8	762
2617	10	938
Shrouded Mains On-Off Switch		
Type	No. of Sockets	Dimension in mm
2618	4	410
2619	6	586
2620	8	762
2621	10	938
RCD Trip 30mA 25A		
Type	No. of Sockets	Dimension in mm
2622	4	495
2623	6	672
2624	8	844
2625	10	1020
Shrouded Mains On-Off Switch with RF Filtered and Transient Protected		
Type	No. of Sockets	Dimension in mm
2626	4	410
2627	6	586
2628	8	762
2629	10	938
Combination Unit with RJ45 Sockets and Shrouded Mains On-Off Switch		
Type	No. of Sockets	Dimension in mm
2630	4 + 4 RJ45	586
2631	6 + 4 RJ45	762
2632	8 + 4 RJ45	938
2633	10 + 4 RJ45	1020



Technical Data

- 13A socket - BS 1363
- Cable - BS 6500
- Plug - BS1363
- Fuse-link 13A - ASTA BS1362
- Current rating - 13A max.
- RCD - BS4293
- Operating voltage - 250V max.
- Manufactured to - BS5733
- Approved to - EN 60950 CE
- RoHS Compliant





For the instant mains distribution in the office, laboratory or workshop environment. These units can be used free standing.


Standard Specification Includes:

- A robust mild steel construction
- Light grey RAL 7035 paint finish
- Internal wiring 2.5mm² - 20A rating
- Earth bonded with external M5 earth stud fitted with 250mm earth lead and terminated with a M6 earth tag
- Red neon "mains on" indicator
- Single units supplied with 2m 1.5mm² 3 core PVC cable terminated with a 13A fused plug


Optional Extras

- Longer cable lengths
- 16A IEC309 / BS 4343 (Commando) plug

Sloping Box: Individually Switched Sockets, No Main Switch		
Type	No. of Sockets	Dimensions L x H x D
13A/2SW SLOPING	2	236 x 97 x 97
13A/4SW SLOPING	4	411 x 97 x 97
13A/6SW SLOPING	6	586 x 97 x 97
13A/10SW SLOPING	10	938 x 97 x 97

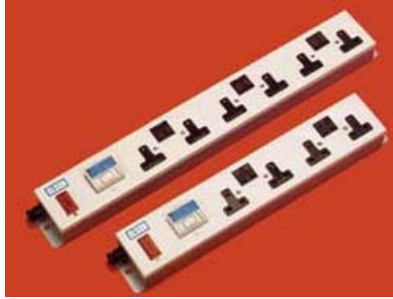


Sloping Box: Non Switched Sockets, No Main Switch		
Type	No. of Sockets	Dimensions L x H x D
13A/4 SLOPING	4	411 x 97 x 97
13A/6 SLOPING	6	586 x 97 x 97



Technical Data

- 13A socket - BS 1363
- Cable - BS 6500
- Plug - BS1363
- Fuse-link 13A - ASTA BS1362
- Current rating - 13A max.
- Nominal Operating voltage - 230VAC.
- Maximum Operating voltage - 250VAC.
- Manufactured to - BS5733
- Approved to - EN 60950 CE
- RoHS Compliant



Portable Power Distribution Units suitable for bench, desk, wall or floor mounting.

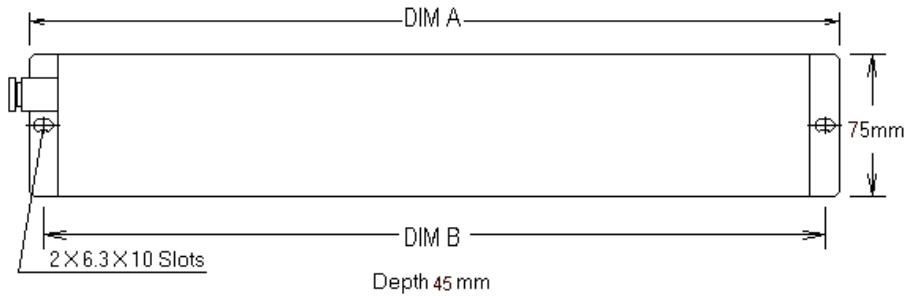
Standard Specification Includes:

- A robust mild steel construction
- Light grey RAL 7035 paint finish
- Internal wiring 2.5mm² - 20A rating
- Earth bonded with external M5 earth stud fitted with 250mm earth lead and terminated with a M6 earth tag
- 2m cable - PVC 1.5mm² 3 core terminated with a 13A fused plug (not shown on photo)
- Panel mounted fuse holder and 30mA RCD

Flat Box with 30mA Tripping Current RCD			
Type	No. of Sockets	Dimension in mm	
		A	B
2002/30	2	348	333
2004/30	4	482	467
2006/30	6	624	609
2008/30	8	755	740
2010/30	10	896	881



Flat Box Dimensions



Technical Data

- 13A socket - BS 1363
- Cable - BS 6500
- Plug - BS1363
- Panel mounted fuse holder - BS5733
- Fuse-link 10A - ASTA BS1362
- Current rating - 13A max.
- Nominal Operating Voltage - 230VAC
- Maximum operating voltage - 250VAC.
- Manufactured to - BS5733
- Approved to - EN 60950 CE
- RoHS Compliant



Portable mains distribution panels suitable for bench, desk, wall or floor mounting.

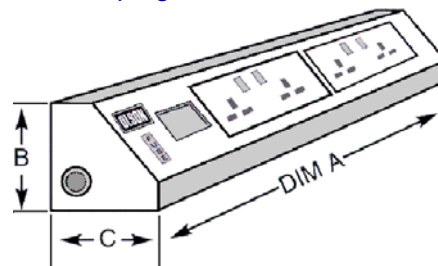
Standard Specification Includes:

- A robust mild steel construction
- Light grey RAL 7035 paint finish
- Internal wiring 2.5mm² - 20A rating
- Earth bonded with external M5 earth stud fitted with 250mm earth lead and terminated with a M6 earth tag
- 2m cable - PVC 1.5mm² 3 core terminated with a 13A fused plug (not shown on photo)
- Panel mounted fuse holder and 30mA RCD

Sloping Box with 30mA Tripping Current RCD		
Type	No. of Sockets	Dimension in mm
		A
3002/30	2	320
3004/30	4	495
3006/30	6	672
3008/30	8	844
3010/30	10	1020

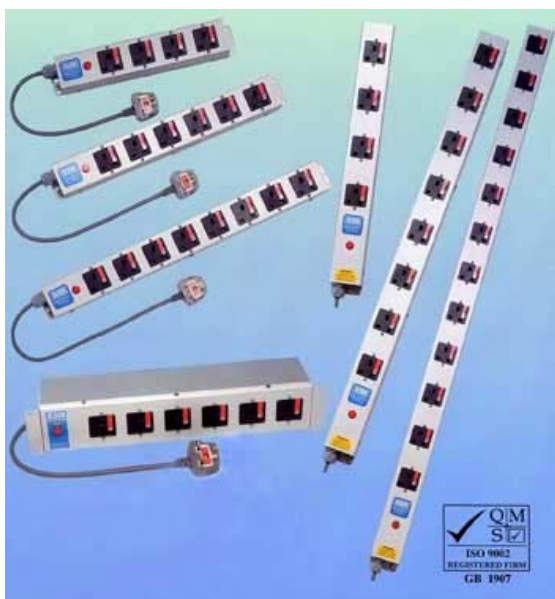


Sloping Box Dimensions



Technical Data

- 13A socket - BS 1363
- Cable - BS 6500
- Plug - BS1363
- Panel mounted fuse holder - BS5733
- Fuse-link 10A - ASTA BS1362
- Current rating - 13A max.
- RCD - BS4293
- Operating voltage - 250V max.
- Manufactured to - BS5733
- Approved to - EN 60950 CE
- RoHS Compliant



OLSON POWER STRIPS feature the 'fused socket' which was designed especially for Olson Electronics. They give maximum protection and flexibility.

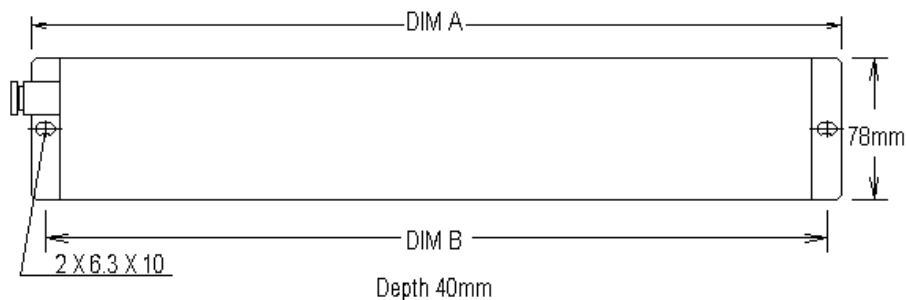
Standard features:

- A robust mild steel construction
- Light grey RAL 7035 paint finish
- Internal wiring 2.5mm² - 20A rating
- Earth bonded with external M5 earth stud fitted with 250mm earth lead and terminated with a M6 earth tag
- Red neon "mains on" indicator
- Individually fused 13A sockets with 3A fuse fitted
- Brackets on each side for easy fixing/installation
- 2m cable - PVC (1.5mm²3 core) terminated with a 13A fused plug
- Available for vertical and horizontal mounting

Optional Extras:

- Longer cable lengths
- Illuminated double pole switch
- Flexible metal conduit or LSF cable

Vertical Power Strips				Horizontal Power Strips			
Item	No. of Sockets	Dimension in mm		Item	No. of Sockets	Dimension in mm	
		A	B			A	B
7504/V	4	537	522	7504/H	4	352	337
7505/V	5	632	617	7505/H	5	412	397
7506/V	6	727	712	7506/H	6	472	457
7508/V	8	917	902	7508/H	8	592	577
7510/V	10	1107	1092	7510/H	10	712	697
7512/V	12	1297	1282	7512/H	12	832	817



The "Fused Socket"

Technical Data

- Fused 13A socket - BS1363
- Cable - BS6500
- Plug - BS1363
- Fuse - link 13A-ASTA BS1362
- Current rating - 13A max.
- Nominal Operating Voltage - 230VAC
- Maximum operating voltage - 230VAC
- Manufactured to - BS5733
- Approved to - EN 60950 CE
- RoHS Compliant