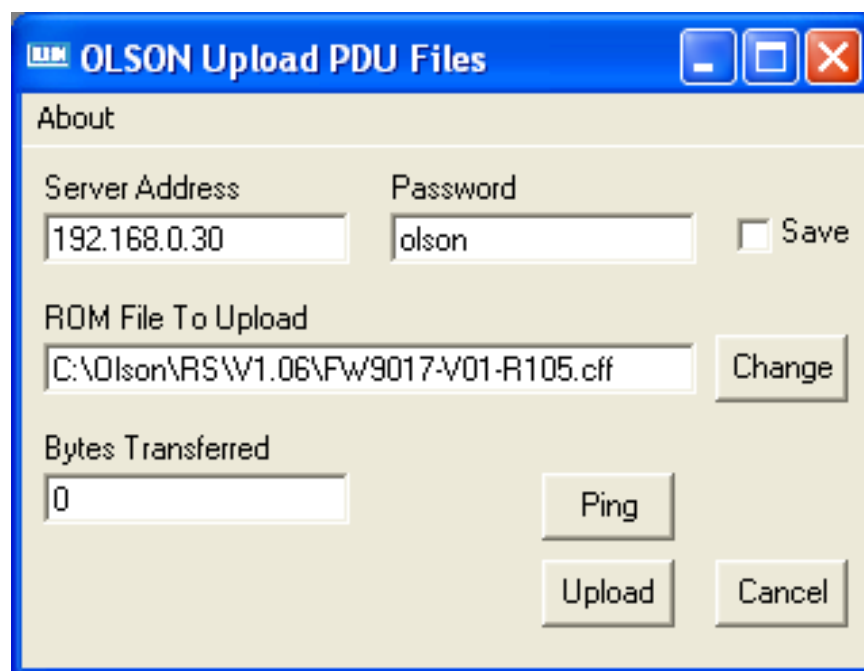


## Upgrading the Firmware on Olson Remote Power Switching and Remote Power Monitoring PDU

1. The Olson Remote Power Switching and Remote Power Monitoring PDU use a small Windows application to upgrade their firmware called OlsonLoad V3.0. It runs under Windows XP or Vista.
2. OlsonLoad is downloaded as a zip file. Save it on your hard disk, extract it and then run the setup.exe file. A short cut will be placed on the start -> all programs -> OlsonLoad.
3. Connect up the Olson PDU to both the power and the network.
4. Ensure the PC network address is set on the same sub-net as the Olson PDU
5. It is advised that it is best to directly connect the PDU to the PC via a RJ45 cross over cable if there are many Olson Remote PDU on the network to ensure the correct PC is upgraded. The OlsonLoad can however display the network MAC address to ensure the correct unit has been selected.
6. If your PC has a software firewall it may be necessary to allow permission for OlsonLoad to access the network.
7. There are two files to upgrade the PDU, the underlying firmware (a \*.cff file) and the application firmware, in this case the web pages, the XML and the snmp functionality (a \*.rom file).
8. It is IMPORTANT TO LOAD THE CFF FILE FIRST AND THE ROM SECOND.
9. Also the PDU may de-energise the outputs while updating the .cff underlying firmware so no mission critical equipment should be connected.
10. The application firmware can be updated with equipment connected as the http and XML web server and snmp do not affect the outputs.
11. In OlsonLoad enter the PDU IP address, the location of the cff file, enter the password (olson by default) and then upload
12. When this is complete then repeat for the \*.rom file.



Olson Upload Program